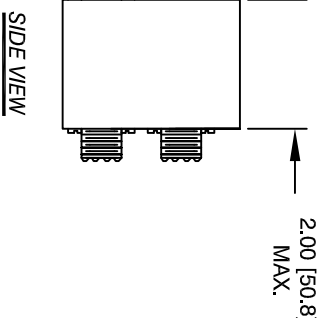
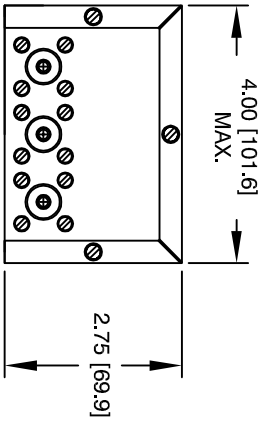
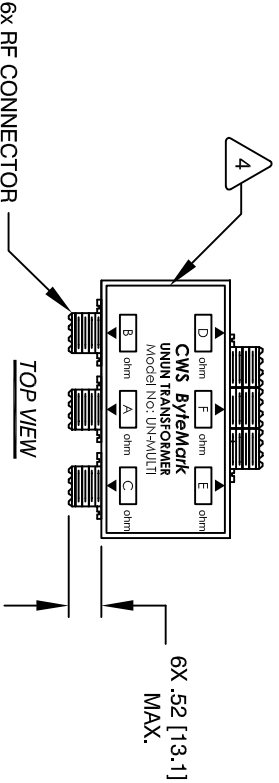
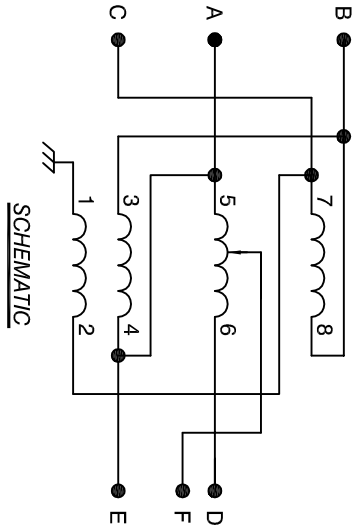


The information contained in this drawing is the sole property of **CWS Coil Winding Specialist**. Any reproduction in part or whole without written permission of **CWS Coil Winding Specialist** is prohibited.

REVISION HISTORY		SIGN & DATE	
REV	ECN	DESCRIPTION	DATE
A		PRODUCTION RELEASE	8/25/04
B		UPDATE DWG AND ROHS COMPLIANCE	01/10/11



- 4 WHERE SHOWN
MARK PART NUMBER AND REVISION
- 5 TRANSCIEVER MULT-MATCHING APPLICATIONS:
- 6 BUILD TO ROHS COMPLIANCE
- 1 POWER RATING: 1 KW CONTINUOUS, 2 KW PEAK.
FREQUENCY RANGE: 1 MHZ TO 45 MHZ
TO UNBALANCED OUTPUT: 28.13 OHMS SO239
UNBALANCED CO-AXIAL INPUT: 50 OHMS SO239
50 Ω : 36.76 Ω (1.36:1) CONNECT COAXIAL A(36.76 Ω) TO COAXIAL F (50 Ω)
50 Ω : 28.13 Ω (1.78:1) CONNECT COAXIAL A(28.13 Ω) TO COAXIAL D (50 Ω)
50 Ω : 22.22 Ω (2.25:1) CONNECT COAXIAL B(22.22 Ω) TO COAXIAL E (50 Ω)
50 Ω : 16.34 Ω (3.06:1) CONNECT COAXIAL B(16.34 Ω) TO COAXIAL F (50 Ω)
50 Ω : 12.5 Ω (4:1) CONNECT COAXIAL B(12.5 Ω) TO COAXIAL D (50 Ω)
50 Ω : 5.56 Ω (9:1) CONNECT COAXIAL C(5.56 Ω) TO COAXIAL E (50 Ω)
50 Ω : 4.08 Ω (12.25:1) CONNECT COAXIAL C(4.08 Ω) TO COAXIAL F (50 Ω)
50 Ω : 3.13 Ω (16:1) CONNECT COAXIAL C(3.13 Ω) TO COAXIAL D (50 Ω)
- 3 IMPEDANCE MATCHING RATIOS:
SPECIFICATIONS:
- 2 WIRE: UL RECOGNIZED 200°C RATED MAGNET WIRE
CWS BYTEMARK OR OTHER APPROVED PART
CORE: COATED FERRITE TOROID
- 1 MATERIAL: UL RECOGNIZED 94V-0 FOR FLAMMABILITY

NOTES: UNLESS OTHERWISE SPECIFIED, READ FROM BOTTOM UP

QTY	CODE IDENT	MFG. P/N	DESCRIPTION	ITEM NO.
			PARTS LIST	
			COILS COM, INC	
			353 W Grove Avenue	
			Orange, CA 92865	
			CWS Coil Winding Specialist.	
			UN-MULTI	
			Multi-Match Unun Transformer	
			50 Ω to 8 RATIOS	
			SIZE [DIM. NO.]	
			B	
			SCALE	
			2=1	
			SHEET 1 OF 1	