

The information contained in this drawing is the sole property of Coil Winding Specialist Inc (CWS). Any reproduction in part or whole without written permission of CWS is prohibited.

## SB-6873-43

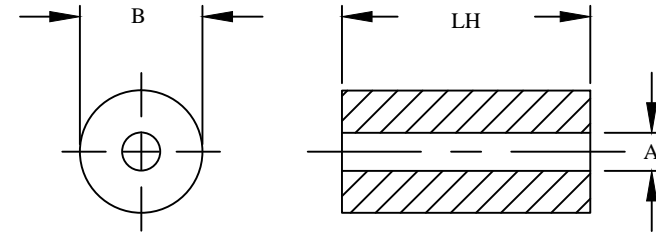
### Features

NiZn ferrite with a range of 20 to 250 MHz for suppression of conducted EMI, that is used for inductive applications (ex: high frequency common-mode chokes)

REVISION HISTORY					
REV	ECN	DESCRIPTION	SIGN & DATE		
			BY	DATE	AP. DATE
A		Production release	EO	9/29/13	JL 9/29/13

Electrical Specifications				
Item	Unit/Symbol	Condition	Value	Tol.
Typical Impedance	$\Omega$	1 MHz	N/A	Typ.
Typical Impedance	$\Omega$	5 MHz	N/A	Typ.
Typical Impedance	$\Omega$	10 MHz	78	Typ.
Typical Impedance	$\Omega$	25 MHz	125	Typ.
Typical Impedance	$\Omega$	100 MHz	200	Typ.
Typical Impedance	$\Omega$	250 MHz	255	Typ.
Initial Permeability	$\mu_0$	@ B < 10 gauss	800	Nom.
Temp. Coeff. Of initial Permeability	%, °C	20 - 70 °C	1.25	Typ.
Coercive Force	H <sub>c</sub>	oersted	0.45	Typ.
Residual Flux Density	Gauss, B <sub>r</sub>	N/A	1300	Typ.
Flux Density	Gauss, B	Initial (B), oersted	2900	Typ.
	Gauss, H	@ Field Strength (H), oersted	10	Typ.
Curie temperature	°C	T <sub>c</sub>	> 130	Nom.
Resistivity	$\Omega$ cm, $\rho$	@ Field Strength	10 <sup>5</sup>	Typ.
Loss Factor	10 <sup>-6</sup> , tan $\delta$ / $\mu$	Initial	250	Typ.
	MHz	@ Frequency	1	Typ.

Dimensional Tolerances				
	in	tol.	mm	tol.
B (Outer Diameter)	0.687	± 0.016	17.45	± 0.40
A (Inner Diameter)	0.375	± 0.009	9.50	± 0.25
LH (Length)	1.125	± 0.029	4.45	± 0.75
Weight	23.10 g			



FRONT VIEW

SIDE VIEW

**For additional detail, specifications and charts see:**

[http://www.bytemark.com/products/ferrite\\_matl.htm](http://www.bytemark.com/products/ferrite_matl.htm)

CODE IDENT	MFG. P/N	DESCRIPTION	ITEM NO.
		<b>PARTS LIST</b>	
AUTOCAD	X	<b>www.coilws.com</b> www.cwsbytemark.com	CWSBYTEMARK 353 West Grove Ave. Orange, CA. 92865
SOLIDWORKS			
DRAWN	EO 9/29/13	<b>TitlE:</b> <b>Ferrite Shielding Bead</b> <b>Material 43, NiZn</b>	
CHECKED	JL 9/29/13		
ENGR.	JL 9/29/13		
APPR.	JL 9/29/13	SIZE DWG. NO.	REV
		<b>B</b>	<b>A</b>
UNLESS OTHERWISE SPECIFIED		SCALE	SHEET 1 OF 1
DIMENSIONING AND TOLERANCE PER ANSI Y14.5M ALL DIMENSIONS ARE IN INCHES AND [MILLIMETERS]. TOLERANCE INCHES: .XXX=±.005 .XX=±.015 <math>\angle=±0°30'</math> TOLERANCE METRICS: .XXX=±.127 .XX=±.38 <math>\angle=±0°30'</math> ANGLE PROJECTION		N/A	
DO NOT SCALE DRAWING			