

The information contained in this drawing is the sole property of Coil Winding Specialist Inc (CWS). Any reproduction in part or whole without written permission of CWS is prohibited.

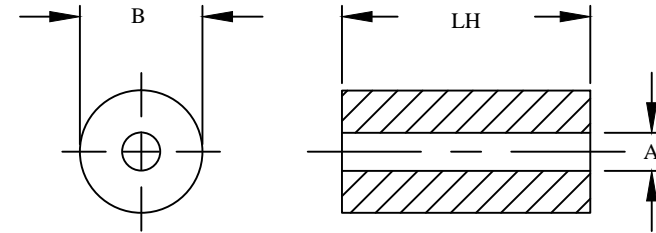
**SB-5623-43**

**Features**

NiZn ferrite with a range of 20 to 250 MHz for suppression of conducted EMI, that is used for inductive applications (ex: high frequency common-mode chokes)

REVISION HISTORY					
REV	ECN	DESCRIPTION	SIGN & DATE		
			BY	DATE	AP. DATE
A		Production release	EO	10/8/13	JL 10/8/13

Electrical Specifications				
Item	Unit/Symbol	Condition	Value	Tol.
Typical Impedance	$\Omega$	1 MHz	N/A	Typ.
Typical Impedance	$\Omega$	5 MHz	N/A	Typ.
Typical Impedance	$\Omega$	10 MHz	51	Typ.
Typical Impedance	$\Omega$	25 MHz	78	Typ.
Typical Impedance	$\Omega$	100 MHz	118	Typ.
Typical Impedance	$\Omega$	250 MHz	140	Typ.
Initial Permeability	$\mu_0$	@ B < 10 gauss	800	Nom.
Temp. Coeff. Of initial Permeability	%, °C	20 - 70 °C	1.25	Typ.
Coercive Force	H <sub>c</sub>	oersted	0.45	Typ.
Residual Flux Density	Gauss, B <sub>r</sub>	N/A	1300	Typ.
Flux Density	Gauss, B	Initial (B), oersted	2900	Typ.
	Gauss, H	@ Field Strength (H), oersted	10	Typ.
Curie temperature	°C	T <sub>c</sub>	> 130	Nom.
Resistivity	$\Omega$ cm, $\rho$	@ Field Strength	10 <sup>5</sup>	Typ.
Loss Factor	10 <sup>-6</sup> , tan $\delta$ / $\mu$	Initial	250	Typ.
	MHz	@ Frequency	1	Typ.



FRONT VIEW

SIDE VIEW

**For additional detail, specifications and charts see:**

[http://www.bytemark.com/products/ferrite\\_matl.htm](http://www.bytemark.com/products/ferrite_matl.htm)

Dimensional Tolerances				
	in	tol.	mm	tol.
B (Outer Diameter)	0.562	± 0.018	14.30	± 0.45
A (Inner Diameter)	6.350	± 0.009	6.35	± 0.25
LH (Length)	13.800	- 0.028	13.80	- 0.70
Weight	8.30 g			

CODE IDENT	MFG. P/N	DESCRIPTION	ITEM NO.
		<b>PARTS LIST</b>	
AUTOCAD	X	www.coilws.com www.cwsbytemark.com	CWSBYTEMARK 353 West Grove Ave. Orange, CA. 92865
SOLIDWORKS			
DRAWN	EO 10/8/13	TITLE: Ferrite Shielding Bead Material 43, NiZn	
CHECKED	JL 10/8/13	SIZE DWG. NO.	REV
ENGR.	JL 10/8/13	B	A
APPR.	JL 10/8/13	SCALE	SHEET 1 OF 1
		N/A	

UNLESS OTHERWISE SPECIFIED  
 DIMENSIONING AND TOLERANCE PER ANSI Y14.5M  
 ALL DIMENSIONS ARE IN INCHES AND [MILLIMETERS].  
 TOLERANCE INCHES:  
 .XXX=±.005 .XX=±.015  $\angle$ =±0°30'  
 TOLERANCE METRICS:  
 .XXX=±.127 .XX=±.38  $\angle$ =±0°30'  
 ANGLE PROJECTION  $\angle$   
 DO NOT SCALE DRAWING