

The information contained in this drawing is the sole property of Coil Winding Specialist Inc (CWS). Any reproduction in part or whole without written permission of CWS is prohibited.

S-351-43-2P

Features

NiZn ferrite with a range of 20 to 250 MHz for suppression of conducted EMI, that is used for inductive applications (ex: high frequency common-mode chokes)

Broadband frequency range of 25-300 MHz. Suppressing frequencies up to 500 MHz. Multi-strand cable common mode filtering and single conductor differential mode filtering.

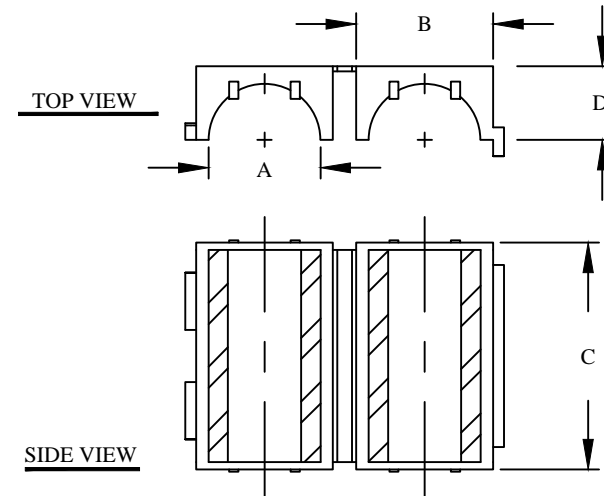
Electrical Specifications

Item	Unit/Symbol	Condition	Value	Tol.
Typical Impedance	Ω	10 MHz	75	Typ.
Typical Impedance	Ω	25 MHz	138	110 Min.
Typical Impedance	Ω	100 MHz	225	$\pm 20\%$
Typical Impedance	Ω	250 MHz	285	Typ.
Initial Permeability	μ_0	@ B < 10 gauss	800	Nom.
Temp. Coeff. Of initial Permeability	%, °C	20 - 70 °C	1.25	Typ.
Coercive Force	H _c	oersted	0.45	Typ.
Residual Flux Density	Gauss, B _r	N/A	1300	Typ.
Flux Density	Gauss, B	Initial (B), oersted	2900	Typ.
	Gauss, H	@ Field Strength (H), oersted	10	Typ.
Curie temperature	°C	T _c	> 130	Nom.
Resistivity	Ω cm, ρ	@ Field Strength	10 ⁵	Typ.
Loss Factor	10 ⁻⁶ , tan δ / μ	Initial	250	Typ.
	MHz	@ Frequency	1	Typ.

Dimensions

	Cable Diameter	A	B (Core Dimension)	C	D	E
In	0.388	0.400	0.870	1.272	0.433	N/A
Tol.	Max.	Nom.	Nom.	Nom.	Nom.	N/A
mm	9.85	10.15	22.10	32.30	11.00	N/A
Tol.	Max.	Nom.	Nom.	Nom.	Nom.	N/A
Weight	42.00 g					

REVISION HISTORY						
REV	ECN	DESCRIPTION	SIGN & DATE			
			BY	DATE	AP.	DATE
A		Production release	EO	9/27/13	JL	9/27/13



For additional detail, specifications and charts see:

http://www.bytemark.com/products/ferrite_matl.htm

CODE IDENT	MFG. P/N	DESCRIPTION	ITEM NO.
PARTS LIST			
AUTOCAD	X	www.coilws.com www.cwsbytemark.com	CWSBYTE MARK 353 West Grove Ave. Orange, CA. 92865
SOLIDWORKS			
DRAWN	EO 9/27/13	Round RF/EMI Suppression Core Material 43, NiZn	
CHECKED	JL 9/27/13		
ENGR.	JL 9/27/13		
APPR.	JL 9/27/13		
UNLESS OTHERWISE SPECIFIED		SIZE DWG. NO.	REV
DIMENSIONING AND TOLERANCE PER ANSI Y14.5M ALL DIMENSIONS ARE IN INCHES AND [MILLIMETERS]. TOLERANCE INCHES: .XXX=±.005 .XX=±.015 $\angle=±0°30'$ TOLERANCE METRICS: .XXX=±.127 .XX=±.38 $\angle=±0°30'$		B	A
ANGLE PROJECTION		SCALE	SHEET 1 OF 1
DO NOT SCALE DRAWING		N/A	