

The information contained in this drawing is the sole property of Coil Winding Specialist Inc (CWS). Any reproduction in part or whole without written permission of CWS is prohibited.

## S-151-43-2P

### Features

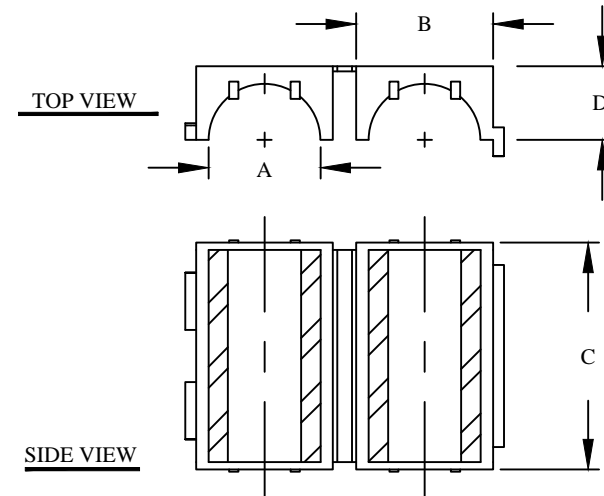
NiZn ferrite with a range of 20 to 250 MHz for suppression of conducted EMI, that is used for inductive applications (ex: high frequency common-mode chokes)

Broadband frequency range of 25-300 MHz. Suppressing frequencies up to 500 MHz. Multi-strand cable common mode filtering and single conductor differential mode filtering.

Electrical Specifications				
Item	Unit/Symbol	Condition	Value	Tol.
Typical Impedance	$\Omega$	10 MHz	90	Typ.
Typical Impedance	$\Omega$	25 MHz	156	125 Min.
Typical Impedance	$\Omega$	100 MHz	250	$\pm 20\%$
Typical Impedance	$\Omega$	250 MHz	305	Typ.
Initial Permeability	$\mu_0$	@ B < 10 gauss	800	Nom.
Temp. Coeff. Of initial Permeability	%, °C	20 - 70 °C	1.25	Typ.
Coercive Force	H <sub>c</sub>	oersted	0.45	Typ.
Residual Flux Density	Gauss, B <sub>r</sub>	N/A	1300	Typ.
Flux Density	Gauss, B	Initial (B), oersted	2900	Typ.
	Gauss, H	@ Field Strength (H), oersted	10	Typ.
Curie temperature	°C	T <sub>c</sub>	> 130	Nom.
Resistivity	$\Omega$ cm, $\rho$	@ Field Strength	10 <sup>5</sup>	Typ.
Loss Factor	10 <sup>-6</sup> , tan $\delta$ / $\mu$	Initial	250	Typ.
	MHz	@ Frequency	1	Typ.

Dimensions						
	Cable Diameter	A	B (Core Dimension)	C	D	E
In	0.500	0.514	1.142	1.280	0.583	N/A
Tol.	Max.	Nom.	Nom.	Nom.	Nom.	N/A
mm	12.70	13.05	29.00	32.50	14.80	N/A
Tol.	Max.	Nom.	Nom.	Nom.	Nom.	N/A
Weight	84.00 g					

REVISION HISTORY						
REV	ECN	DESCRIPTION	SIGN & DATE			
			BY	DATE	AP.	DATE
A		Production release	EO	9/27/13	JL	9/27/13



**For additional detail, specifications and charts see:**

[http://www.bytemark.com/products/ferrite\\_matl.htm](http://www.bytemark.com/products/ferrite_matl.htm)

CODE IDENT	MFG. P/N	DESCRIPTION	ITEM NO.
PARTS LIST			
AUTOCAD	X	www.coilws.com www.cwsbytemark.com	CWSBYTEMARK 353 West Grove Ave. Orange, CA. 92865
SOLIDWORKS			
SIGN	DATE	TITLE: Round RF/EMI Suppression Core Material 43, NiZn	
DRAWN	EO 9/27/13	SIZE	DWG. NO.
CHECKED	JL 9/27/13	B	S-151-43-2P
ENGR.	JL 9/27/13	SCALE	N/A
APPR.	JL 9/27/13		SHEET 1 OF 1
UNLESS OTHERWISE SPECIFIED			
DIMENSIONING AND TOLERANCE PER ANSI Y14.5M			
ALL DIMENSIONS ARE IN INCHES AND [MILLIMETERS].			
TOLERANCE INCHES: .XXX=±.005 .XX=±.015 <math>\angle=±0°30'</math>			
TOLERANCE METRICS: .XXX=±.127 .XX=±.38 <math>\angle=±0°30'</math>			
ANGLE PROJECTION			
DO NOT SCALE DRAWING			