

The information contained in this drawing is the sole property of Coil Winding Specialist Inc (CWS). Any reproduction in part or whole without written permission of CWS is prohibited.

## LB-8112-43

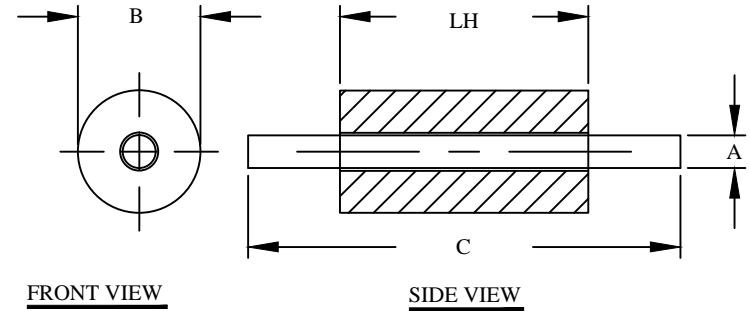
### Features

NiZn ferrite with a range of 20 to 250 MHz for suppression of conducted EMI, that is used for inductive applications (ex: high frequency common-mode chokes)

Copper wire assembled for circuit assembly. 22 AWG wire resistance maximum 3.5 mΩ. 20 AWG wire resistance maximum 2.2 mΩ.

Electrical Specifications				
Item	Unit/Symbol	Condition	Value	Tol.
Typical Impedance	Ω	1 MHz	N/A	Typ.
Typical Impedance	Ω	5 MHz	N/A	Typ.
Typical Impedance	Ω	10 MHz	72	Typ.
Typical Impedance	Ω	25 MHz	116	39 Min.
Typical Impedance	Ω	100 MHz	180	± 20%
Typical Impedance	Ω	250 MHz	168	Typ.
Initial Permeability	μ <sub>0</sub>	@ B < 10 gauss	800	Nom.
Temp. Coeff. Of initial Permeability	%, °C	20 - 70 °C	1.25	Typ.
Coercive Force	H <sub>c</sub>	oersted	0.45	Typ.
Residual Flux Density	Gauss, B <sub>r</sub>	N/A	1300	Typ.
Flux Density	Gauss, B	Initial (B), oersted	2900	Typ.
	Gauss, H	@ Field Strength (H), oersted	10	Typ.
Curie temperature	°C	T <sub>c</sub>	> 130	Nom.
Resistivity	Ω cm, ρ	@ Field Strength	10 <sup>5</sup>	Typ.
Loss Factor	10 <sup>-6</sup> , tanδ / μ	Initial	250	Typ.
	MHz	@ Frequency	1	Typ.
Dimensional Tolerances				
	in	tol.	mm	tol.
B (Outer Diameter)	0.138	± 0.009	3.50	± 0.25
A (wire type)	22 AWG	N/A	0.65	N/A
LH (Length)	0.450	± 0.016	11.40	± 0.40
C (wire)	2.440	± 0.059	62.00	± 1.50
Weight	0.70 g			

REVISION HISTORY						
REV	ECN	DESCRIPTION	SIGN & DATE			
			BY	DATE	AP.	DATE
A		Production release	EO	9/29/13	JL	9/29/13



**For additional detail, specifications and charts see:**

[http://www.bytemark.com/products/ferrite\\_matl.htm](http://www.bytemark.com/products/ferrite_matl.htm)

CODE IDENT	MFG. P/N	DESCRIPTION	ITEM NO.
		<b>PARTS LIST</b>	
AUTOCAD	X	<b>www.coilws.com</b> www.cwsbytemark.com	CWSBYTEMARK 353 West Grove Ave. Orange, CA. 92865
SOLIDWORKS			
DRAWN	EO 9/29/13	<b>TITLE:</b> <b>Ferrite Shielding Bead on Lead</b> <b>Material 43, NiZn</b>	
CHECKED	JL 9/29/13		
ENGR.	JL 9/29/13		
APPR.	JL 9/29/13		
UNLESS OTHERWISE SPECIFIED		SIZE	DWG. NO.
DIMENSIONING AND TOLERANCE PER ANSI Y14.5M		B	LB-8112-43
ALL DIMENSIONS ARE IN INCHES AND [MILLIMETERS].		SCALE	N/A
TOLERANCE INCHES: .XXX=±.005 .XX=±.015 <=±0°30'		SHEET 1 OF 1	
TOLERANCE METRICS: .XXX=±.127 .XX=±.38 <=±0°30'			
ANGLE PROJECTION			
DO NOT SCALE DRAWING			