

The information contained in this drawing is the sole property of Coil Winding Specialist Inc (CWS). Any reproduction in part or whole without written permission of CWS is prohibited.

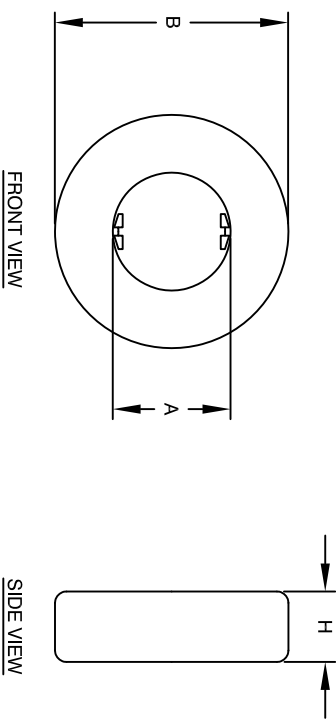
REVISION HISTORY						
REV	ECN	DESCRIPTION	BY	DATE	CHK	DATE
A		INITIAL RELEASE	JL	02/21/17	JM	02/21/17

Features

- High Permeability (30-90k), high Impedance Z and high Insertion attenuation
- Suppresses the asymmetrical EMI currents
- High saturation Flux density can reduce over voltage peaks
- High Curie Temperature and excellent temperature chracteristics
- Core Type: Nanocrystalline, NanoByte™

Electrical Specifications				
Item	Units	Condition	Value	Tol.
A_L	$\mu\text{H}/\text{N}^2$	@ 10KHz	22.5 - 41.3	N/A
A_L	$\mu\text{H}/\text{N}^2$	@ 100KHz	5.6	N/A
Permeability @ H peak 3.00 mA/cm	μ_0	@ 10KHz	90000	±25%
A_e	cm^2	N/A	0.20	±10%
L_e	cm	N/A	7.10	±10%
$L_e \times N$	mA x turn	@ 10KHz	15	±10%
$L_e \times N$	mA x turn	@ 100KHz	15	±10%
Saturation Flux Density	T	N/A	1.2	Max.
Curie Temperature	°C	N/A	580	Nom.

Dimensions and Tolerances				
	in	tol.	mm	tol.
Core Only				
B (Outer Diameter)	0.98	±0.40	25	±1
A (Inner Diameter)	0.79	±0.40	20	±1
H (Height)	0.39	±0.40	10	±1
With Case On				
B (Outer Diameter)	1.09	±0.40	27.6	±1
A (Inner Diameter)	0.70	±0.40	17.8	±1
H (Height)	0.49	±0.40	12.5	±1



CODE IDENT	MFG. P/N	DESCRIPTION	ITEM NO.
PARTS LIST			
AUTOCAD	X	CWSBYTEMARK	
SOLIDWORKS		353 W Grove Ave	
SIGN	DATE	Orange, CA 92665	
DRWN	DATE	Nanocrystalline Core CN25-20-10F	
CHKD	DATE		
ENGR.	DATE		
APPR.	DATE	SCALE	REV
		N/A	A

UNLESS OTHERWISE SPECIFIED
 DIMENSIONING AND TOLERANCE PER ANSI Y14.5M
 ALL DIMENSIONS ARE IN INCHES
 AND [MILLIMETERS].
 TOLERANCE RANGES:
 XXX±.005 XX±.015
 TOLERANCE METRICS:
 XXX±.127 XX±.38
 ANGLE PROJECTION
 DO NOT SCALE DRAWING