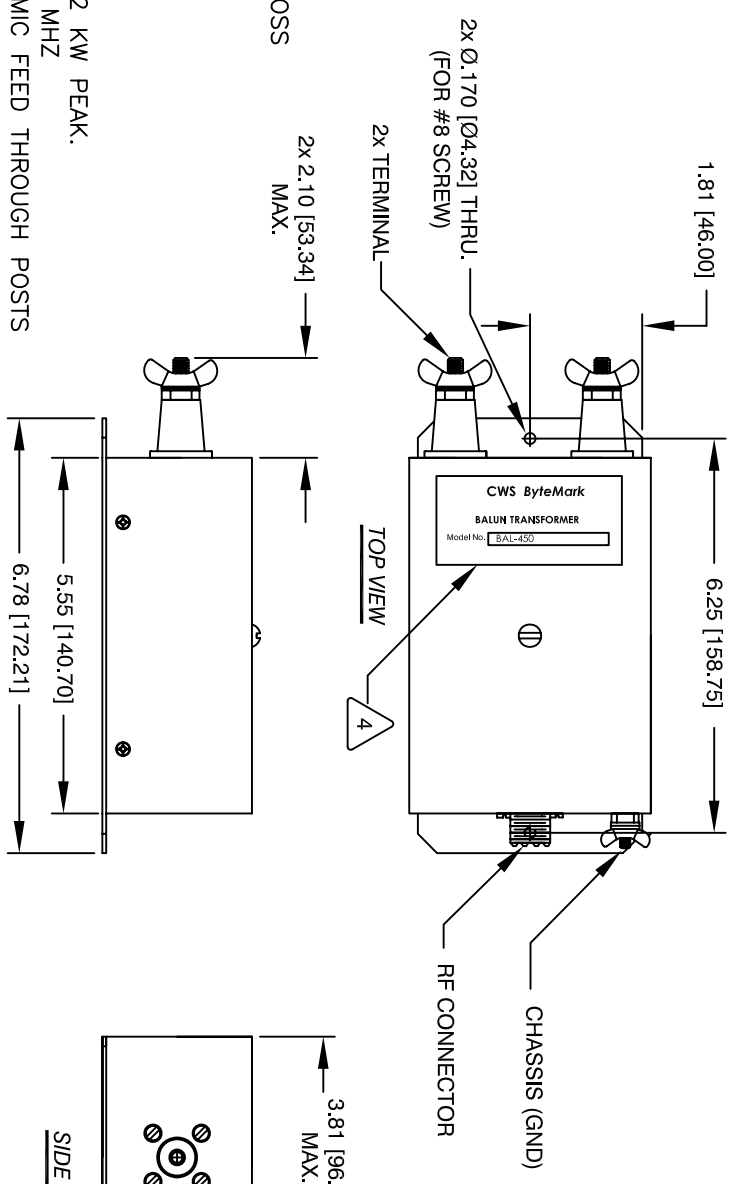
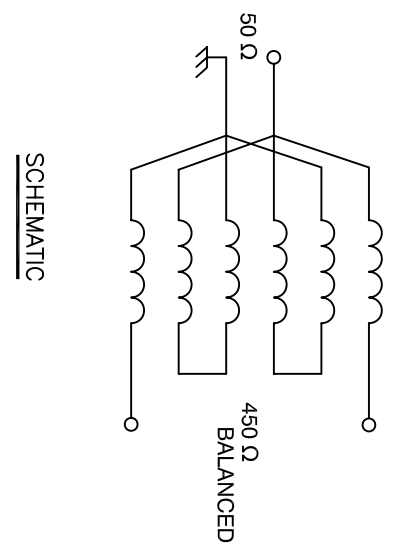


The information contained in this drawing is the sole property of CWS Coil Winding Specialist. Any reproduction in part or whole without written permission of CWS Coil Winding Specialist is prohibited.

REVISION HISTORY

REV	ECN	DESCRIPTION	SIGN & DATE			
			BY	DATE	CHK	DATE
B		PRODUCTION RELEASE	TDK	2/07/06	JLJU	2/07/06
C		UPDATED AND ROHS COMPLIANT	RLL	2/05/11	JLJU	2/05/11



- 6 BUILT TO ROHS COMPLIANCE
- LONG CO-AXIAL RUNS TO REDUCE LOSS
- FOR 450Ω TWIN LEAD, REPLACING APPLICATIONS:
- 5 WHERE SHOWN
- MARK PART NUMBER AND REVISION



- 4 EFFICIENCY = 97%
- POWER RATING: 1 KW CONTINUOUS, 2 KW PEAK.
- FREQUENCY RANGE: 1.0 MHZ TO 30 MHZ
- TO BALANCED OUTPUT: 450 Ω, CERAMIC FEED THROUGH POSTS
- UNBALANCED CO-AXIAL INPUT: 50 Ω SO239
- IMPEDANCE MATCH RATIO: 1:9
- 3 SPECIFICATIONS:

- 2 WIRE: UL RECOGNIZED 200°C RATED MAGNET WIRE
 - CWS BYTEMARK OR OTHER APPROVED PART
 - CORE: COATED FERRITE TOROID, K MATERIAL
 - 1 MATERIAL: UL RECOGNIZED 94V-0 FOR FLAMMABILITY
- NOTES: UNLESS OTHERWISE SPECIFIED, READ TEXT FROM BOTTOM UP.

QTY	CODE IDENT	MFG. P/N	DESCRIPTION	ITEM NO.
			PARTS LIST	
			www.collws.com sclss@collws.com	
			Coil Winding Specialist Inc. 353 West Grove Avenue Orange, CA 92865, USA	
			TITLE: Transmission Line Transformer Balun Transformer 50 Ω : 450 Ω	
			SIZE Dwg. No. B BAL-450	REV C
			SCALE NOT TO SCALE	SHEET 1 OF 1

UNLESS OTHERWISE SPECIFIED
DIMENSIONING AND TOLERANCE PER ANSI Y14.5M
ALL DIMENSIONS ARE IN INCHES AND [MILLIMETERS].
TOLERANCE INCHES: \pm .030
TOLERANCE METRICS: \pm .020
XXX=±.010 XX=±.020 X=±.030
XXX=±.254 XX=±.51

ANGLE PROJECTION DO NOT SCALE DRAWING